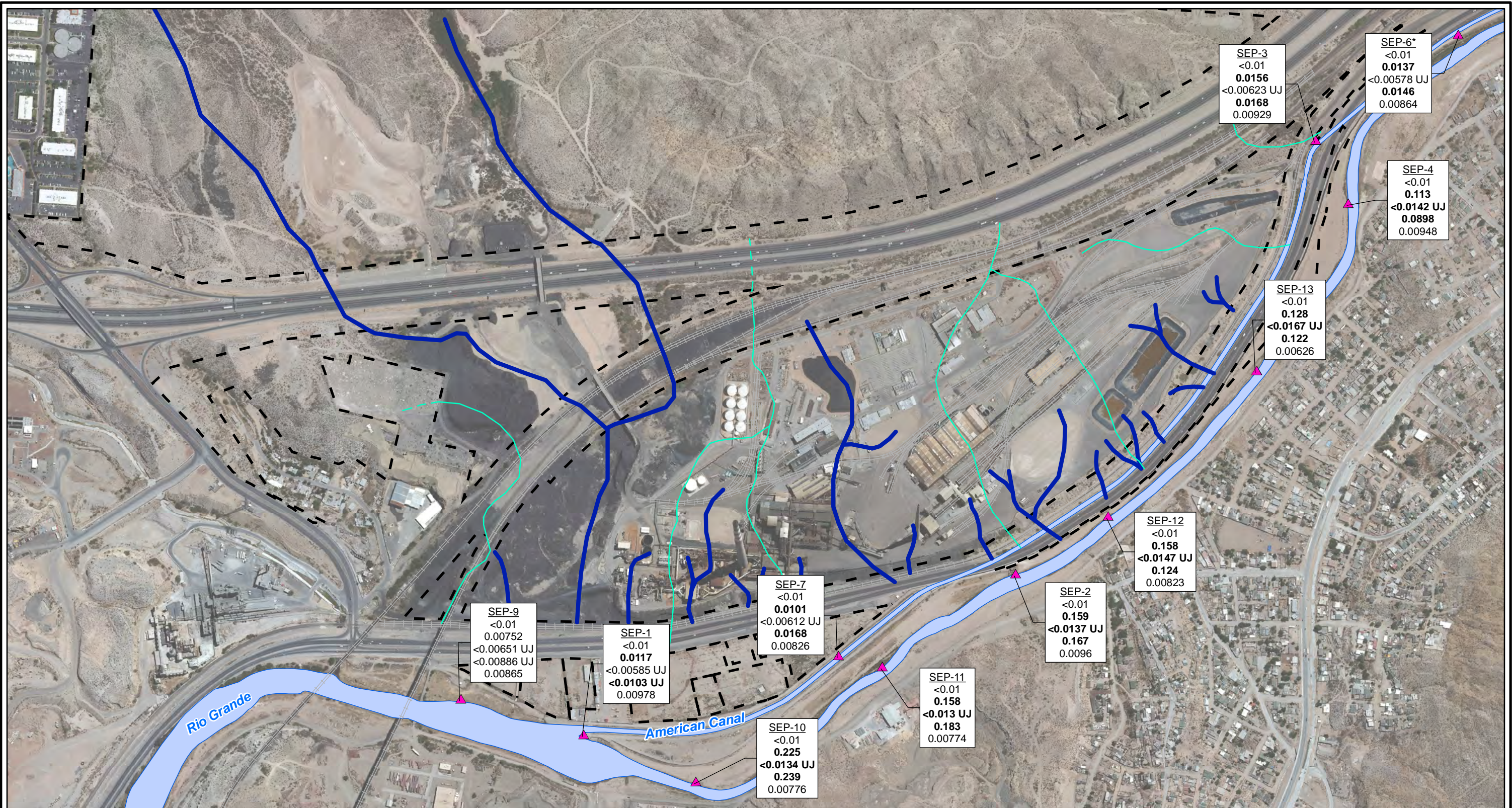


CITY: Highlands Ranch DIV/GROUP: GIS DB: BG
 Project (Project #):
 Path: \\NASARCO_ElPaso\GIS\MXD\RI_Revision\Fig 4-79 Arsenic_SW_2010to2012.mxd Date: 9/13/2013 Time: 4:04:20 PM

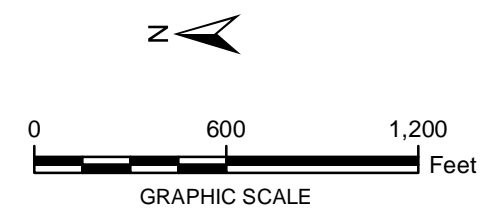


LEGEND:

- ▲ Surface Water Stations
- Historical Arroyo Trace Lines
- - - Property Boundary
- Historical Drainage Divide


Note:
 Screening Level = 0.01 mg/L
 UJ = Estimated reporting limit
 mg/L = milligrams per liter
Bolded value = result exceeds Screening Level
 < = Non detect at the reporting limit shown
 *Actual location of SEP-6 is approximately one mile further downstream on the American Canal.

SEP-7 <0.01 0.0101 <0.00612 UJ 0.0168 0.00826	Well ID Fall 2010 Spring 2011 Fall 2011 Spring 2012 Fall 2012
----------------------------------------------------------------------------	------------------------------------------------------------------------------



FORMER EL PASO SMELTER SITE
EL PASO, TEXAS

**ARSENIC DISTRIBUTION IN SURFACE WATER
FALL 2010 TO FALL 2012**



**FIGURE
4-81**