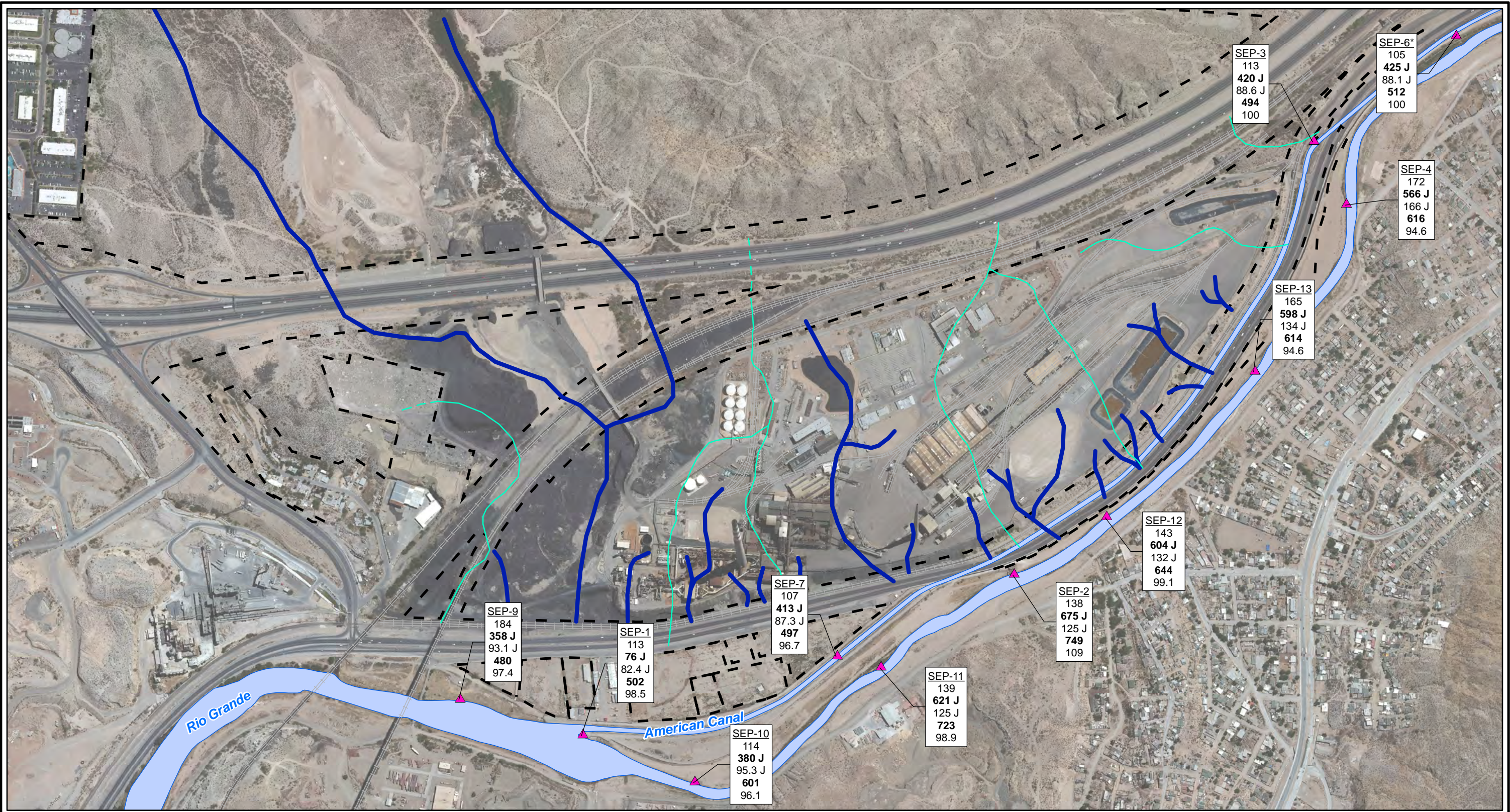


CITY: Highlands Ranch DIV/GROUP: GIS DB: BG
 Project (Project #):
 Path: \\NASARCO_ElPaso\GIS\MXD\RI_Revision\Fig 4-80_Chloride_SW_2010to2012.mxd Date: 9/13/2013 Time: 4:04:12 PM

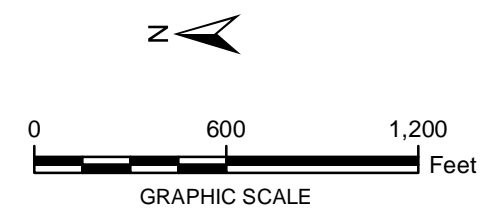


LEGEND:

- ▲ Surface Water Stations
- Historical Arroyo Trace Lines
- - - Property Boundary
- Historical Drainage Divide

Note:
 Screening Levels - American Canal: Not established,
 applied Rio Grande Screening Level. Rio Grande: 230 mg/L
 mg/L = milligrams per liter
 J = The reported value was obtained from a reading that
 was less than reporting limit but greater than or equal to the
 method detection limit.
Bolded value = result exceeds Screening Level
 *Actual location of SEP-6 is approximately one mile further
 downstream on the American Canal.

| SEP-7 | Well ID |
|--------------|-------------|
| 107 | Fall 2010 |
| 413 J | Spring 2011 |
| 87.3 J | Fall 2011 |
| 497 | Spring 2012 |
| 96.7 | Fall 2012 |



FORMER EL PASO SMELTER SITE
EL PASO, TEXAS

**CHLORIDE DISTRIBUTION IN SURFACE WATER
FALL 2010 TO FALL 2012**

**MALCOLM
PIRNIE**

**FIGURE
4-82**