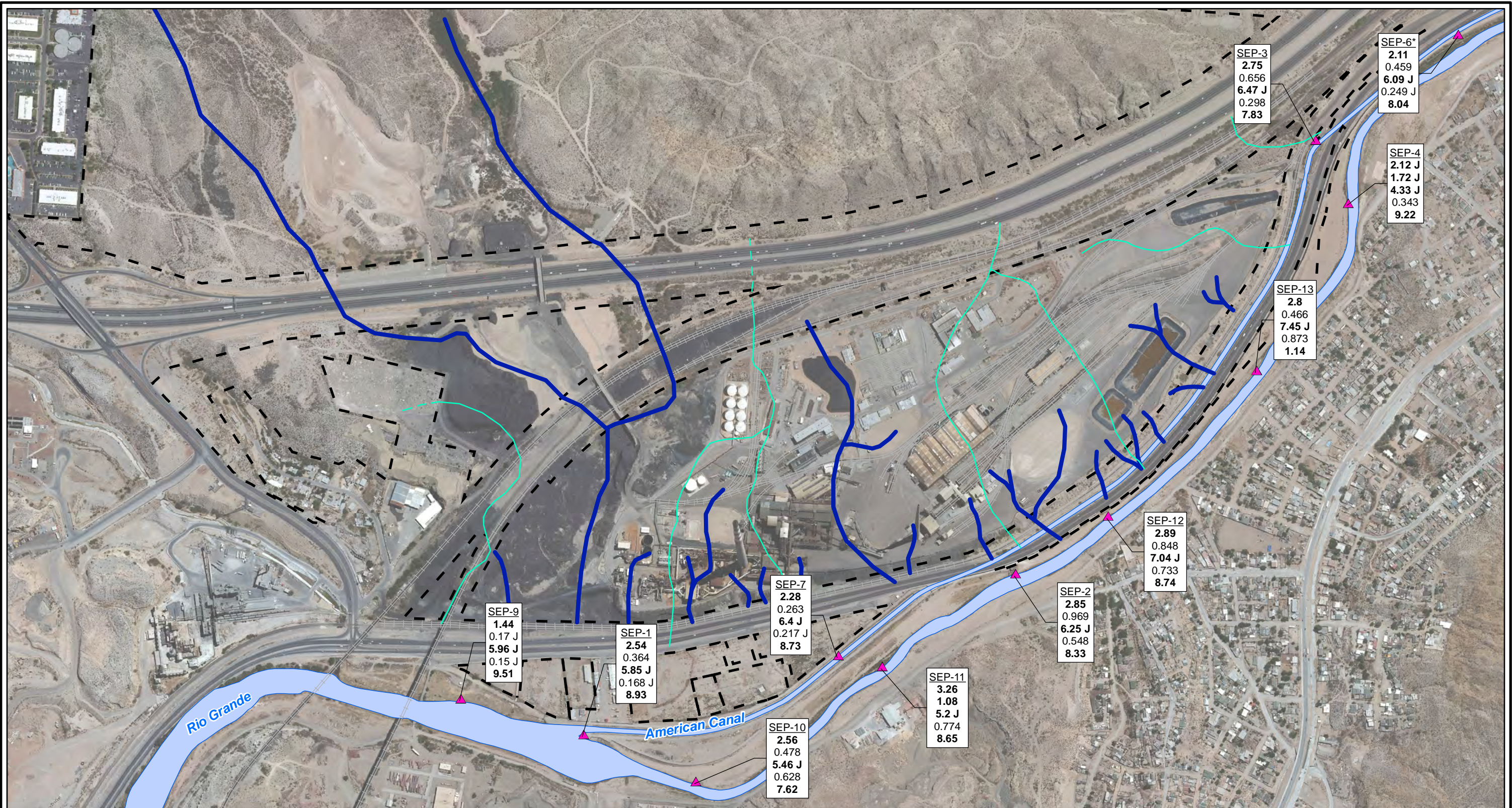


CITY: Highlands Ranch DIV/GROUP: GIS DB: BG
 Project (Project #):
 Path: \\NASARCO_ElPaso\GIS\MXD\RI_Revision\Fig 4-81 Iron_SW_2010to2012.mxd Date: 9/15/2013 Time: 4:04:30 PM

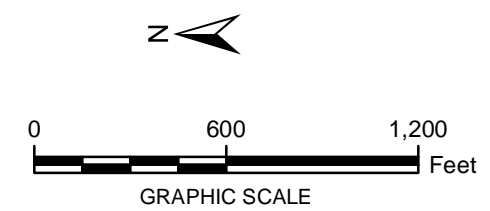


LEGEND:

- ▲ Surface Water Stations
- Historical Arroyo Trace Lines
- - - Property Boundary
- Historical Drainage Divide

Note:
 Screening Levels - American Canal: Not established, applied Rio Grande Screening Level. Rio Grande: 1 mg/L
 mg/L = milligrams per liter
 J = The reported value was obtained from a reading that was less than reporting limit but greater than or equal to the method detection limit.
Bolded value = result exceeds Screening Level
 *Actual location of SEP-6 is approximately one mile further downstream on the American Canal.

SEP-7	Well ID
2.28	Fall 2010
0.263	Spring 2011
6.4 J	Fall 2011
0.217 J	Spring 2012
8.73	Fall 2012



FORMER EL PASO SMELTER SITE
EL PASO, TEXAS

**IRON DISTRIBUTION IN SURFACE WATER
FALL 2010 TO FALL 2012**

**MALCOLM
PIRNIE**

**FIGURE
4-83**