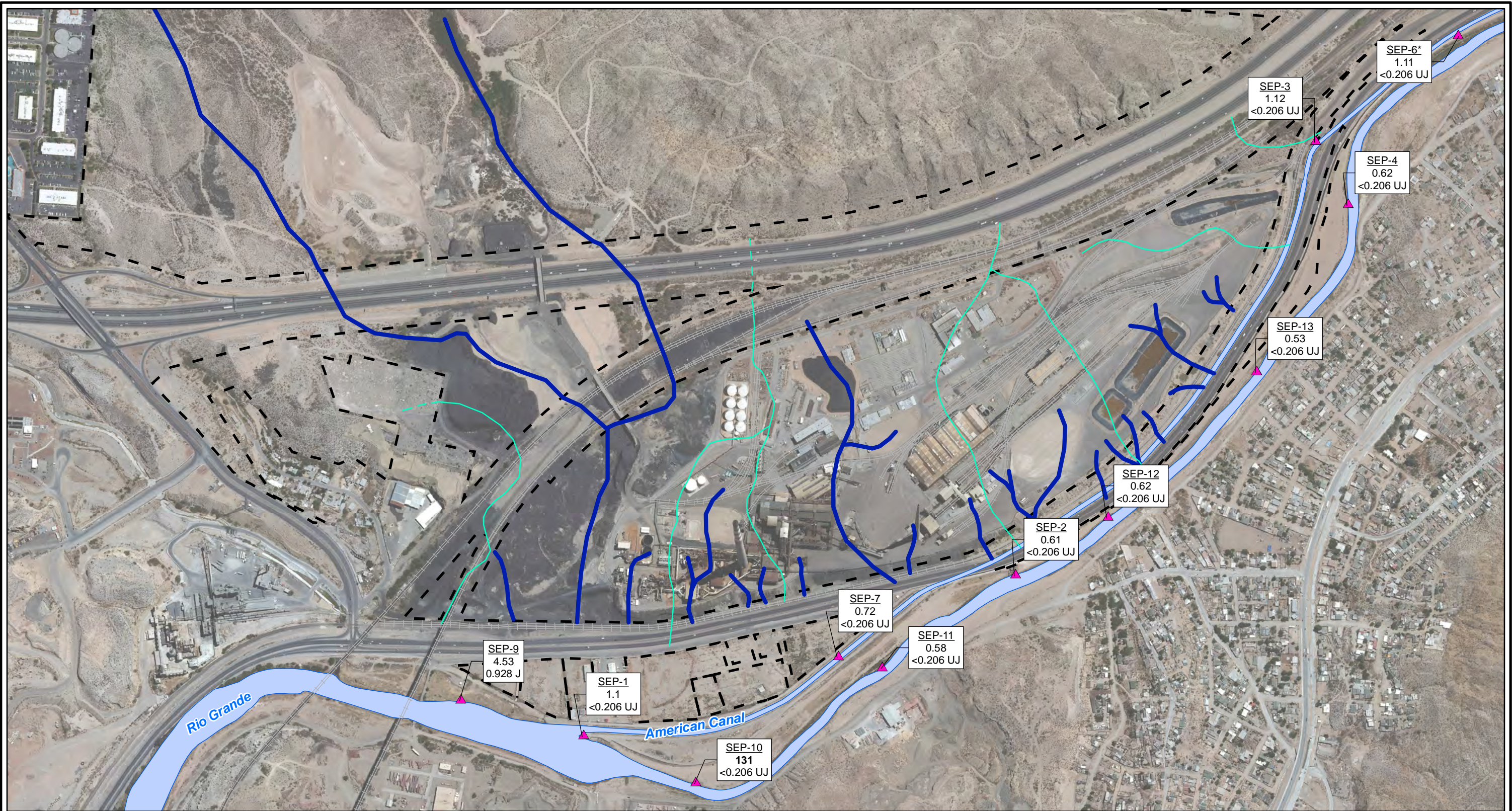


CITY: Highlands Ranch DIV/GROUP: GIS DB: BG
 Project (Project #):
 Path: \\NASARCO_ElPaso\GIS\MXD\RI_Revision\Fig 4-85 Nitrate_SW_2010.mxd Date: 9/13/2013 Time: 4:04:38 PM

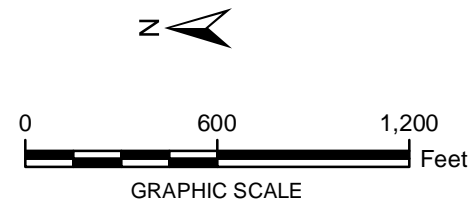


LEGEND:

- ▲ Surface Water Stations
- Historical Arroyo Trace Lines
- - - Property Boundary
- Historical Drainage Divide

Note:
 Screening Level = 10 mg/L
 mg/L = milligrams per liter
 J = The reported value was obtained from a reading that was less than reporting limit but greater than or equal to the method detection limit.
 JJ = Estimated reporting limit
Bolded value = result exceeds Screening Level
 < = Non detect at the reporting limit shown
 *Actual location of SEP-6 is approximately one mile further downstream on the American Canal.

SEP-7	Well ID
0.72	Fall 2010
<0.206 JJ	Fall 2011



FORMER EL PASO SMELTER SITE
 EL PASO, TEXAS

**NITRATE DISTRIBUTION IN SURFACE WATER
 FALL 2010 AND FALL 2011**

**MALCOLM
 PIRNIE**

**FIGURE
 4-85**