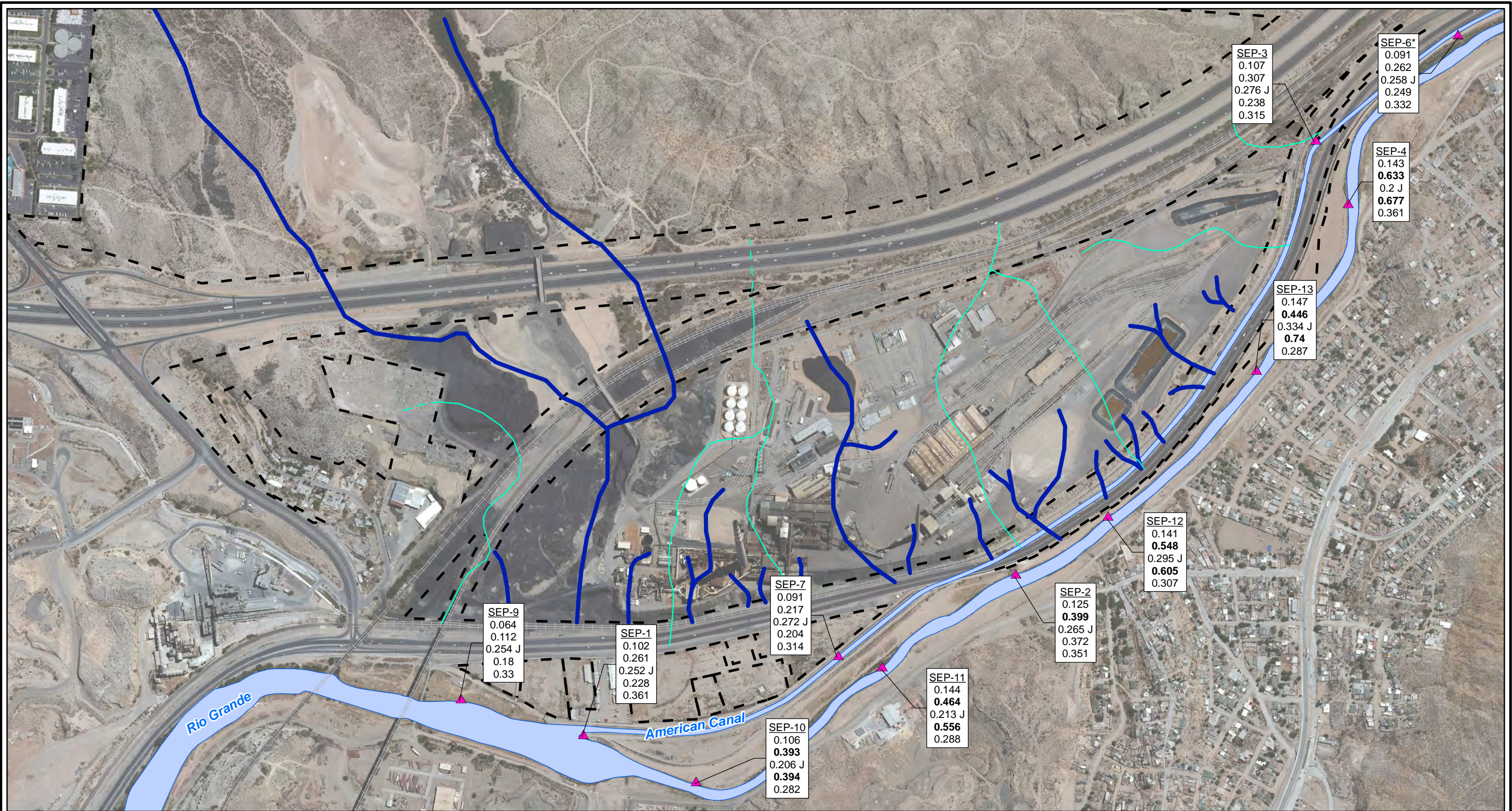


CITY: Highlands Ranch DIV/GROUP: GIS DB: BG
 Project (Project #):
 Path: \\NASARCO_ElPaso\GIS\MXD\DIRI_ Revised\Fig 4-85 Manganese SW 2010to2012.mxd Date: 11/6/2013 Time: 9:41:21 AM

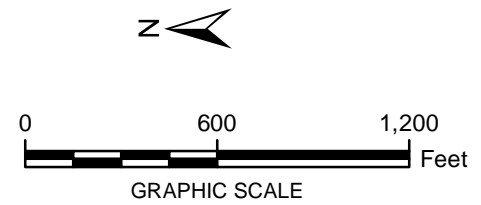


LEGEND:

- ▲ Surface Water Stations
- Historical Arroyo Trace Lines
- - - Property Boundary
- Historical Drainage Divide

Note:
 Screening Level - 0.39 mg/L
 mg/L = milligrams per liter
 J = The reported value was obtained from a reading that was less than reporting limit but greater than or equal to the method detection limit.
Bolded value = result exceeds Screening Level
 < = Non detect at the reporting limit shown
 *Actual location of SEP-6 is approximately one mile further downstream on the American Canal.

SEP-7	Well ID
0.091	Fall 2010
0.217	Spring 2011
0.272 J	Fall 2011
0.204	Spring 2012
0.314	Fall 2012



FORMER EL PASO SMELTER SITE
 EL PASO, TEXAS

**MANGANESE DISTRIBUTION IN SURFACE WATER
 FALL 2010 TO FALL 2012**

**MALCOLM
 PIRNIE**

**FIGURE
 4-86**