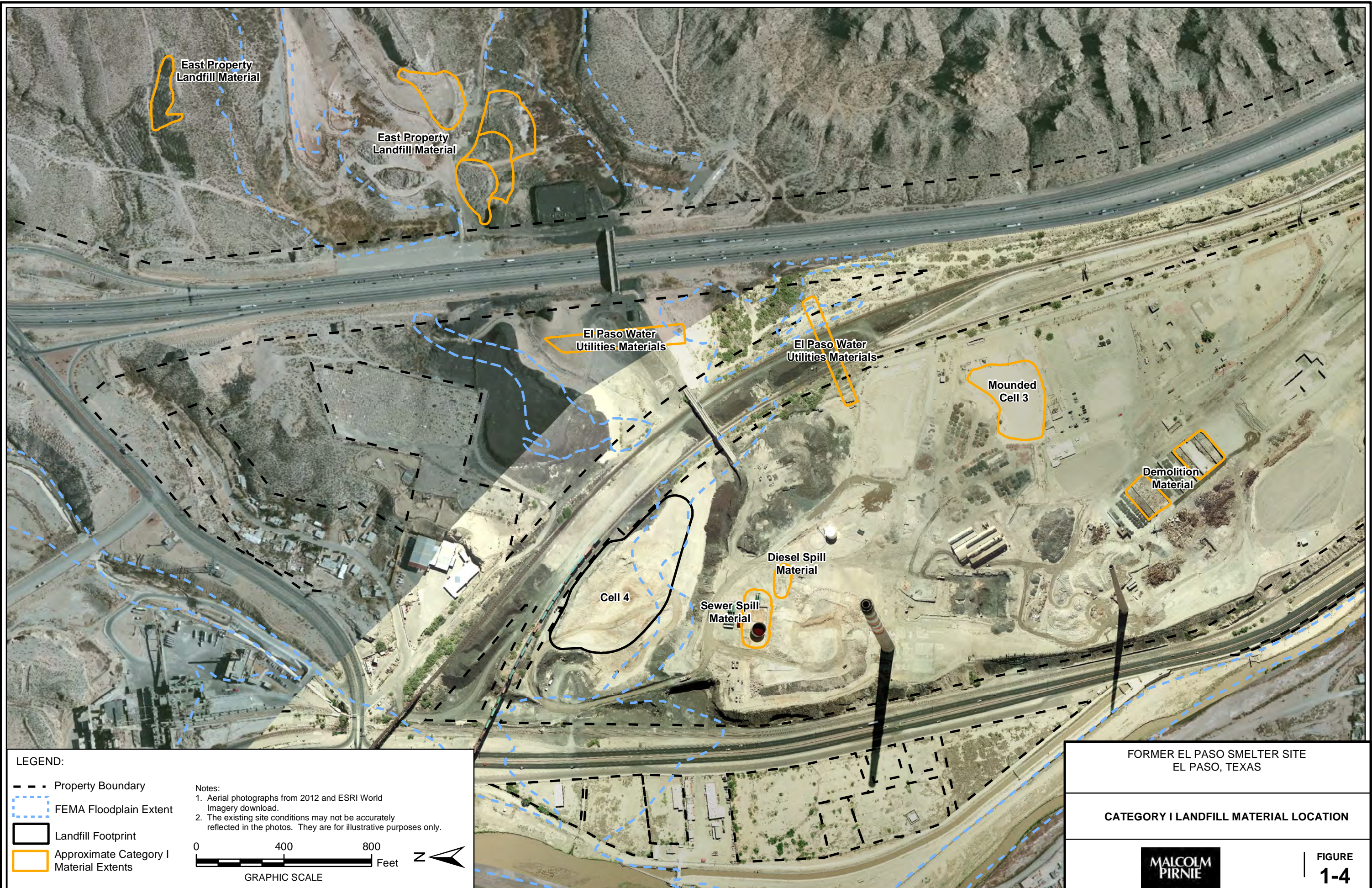






CITY: Highlands Ranch DIV/GROUP: GIS DB: BG  
Project (Project #):  
Path: I:\SARCO - El Paso\GIS\MXD\RJ - Revised\Fig 1-4 CatII Landfill Material Location.mxd Date: 7/31/2013 Time: 11:53:40 AM



**LEGEND:**


-  Property Boundary
-  FEMA Floodplain Extent
-  Landfill Footprint
-  Approximate Category I Material Extents

Notes:  
1. Aerial photographs from 2012 and ESRI World Imagery download.  
2. The existing site conditions may not be accurately reflected in the photos. They are for illustrative purposes only.



FORMER EL PASO SMELTER SITE  
EL PASO, TEXAS

**CATEGORY I LANDFILL MATERIAL LOCATION**



**FIGURE 1-4**