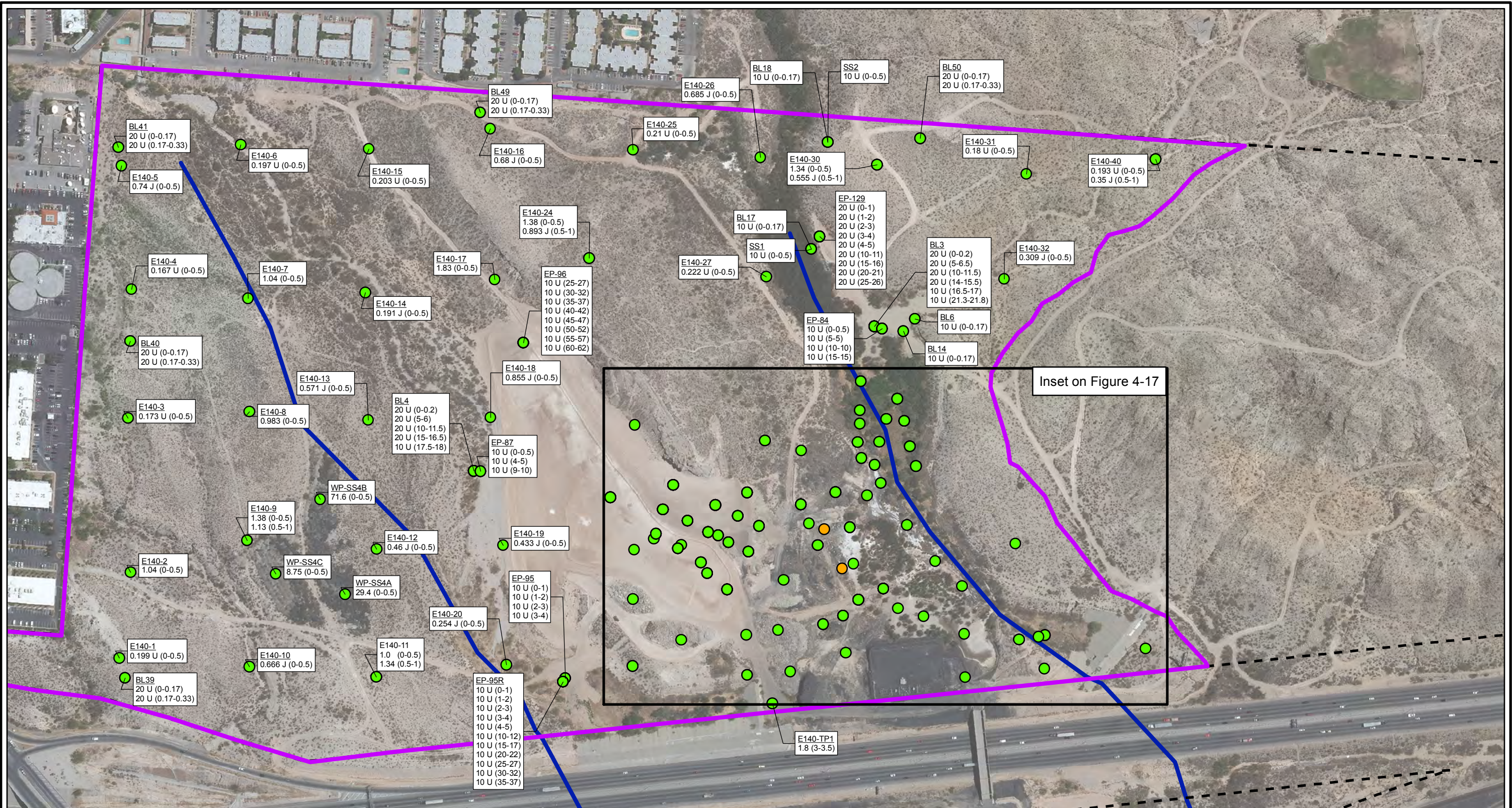
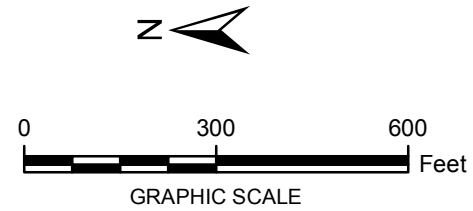
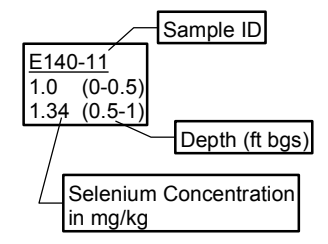


CITY: Highlands Ranch DIV/GROUP: GIS DB: BG
 Project (Project #):
 Path: I:\ASARCO - El Paso\GIS\MXDR\I Revised\Fig 4-16 Selenium Soil Locations EastProp_1.mxd Date: 9/13/2013 Time: 3:15:51 PM



- LEGEND:**
- DETECTED ≤ SCREENING LEVEL
 - DETECTED > SCREENING LEVEL
 - HISTORICAL ARROYO TRACE LINES
 - - - PROPERTY BOUNDARY
 - AREA BOUNDARY

NOTE:
 Screening Level (RRR SAI-Ind = 1300 mg/kg)
Bolded Value exceeds screening level
Italics Depth below groundwater
 J = Estimated Value
 U = Not detected at or above reporting limit
 Date of Aerial Photo: 2009



FORMER EL PASO SMELTER SITE
EL PASO, TEXAS

**SELENIUM DISTRIBUTION IN SOIL
EAST PROPERTY**

**MALCOLM
PIRNIE**

**FIGURE
4-16**