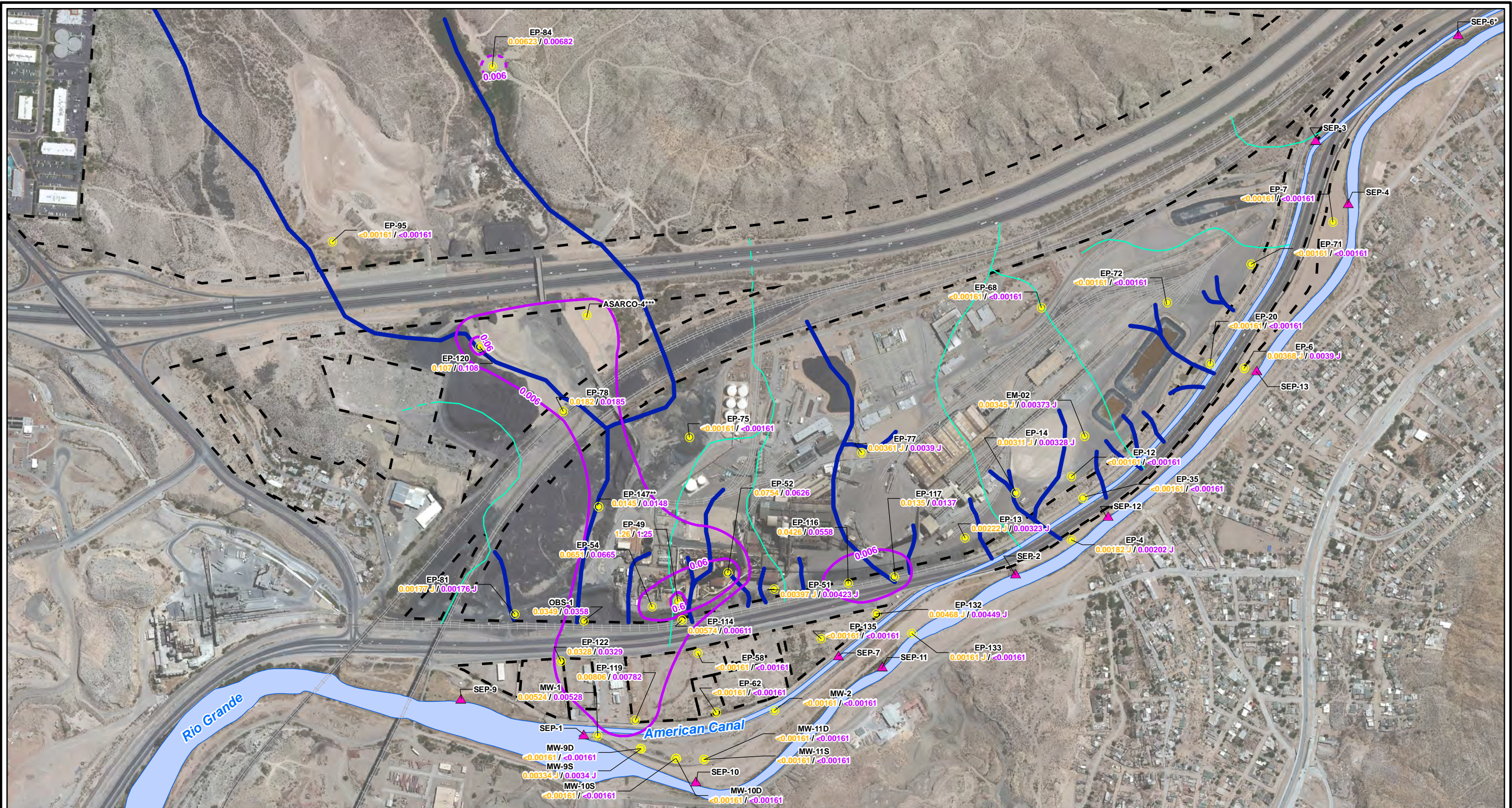


CITY: Highlands Ranch DIV/GROUP: GIS DB: BG  
 Project (Project #):  
 Path: I:\ASARCO - El Paso\GIS\MXD\RI\_ Revised\Fig 4-62 Antimony\_GW\_Fall2012.mxd Date: 9/13/2013 Time: 3:43:51 PM

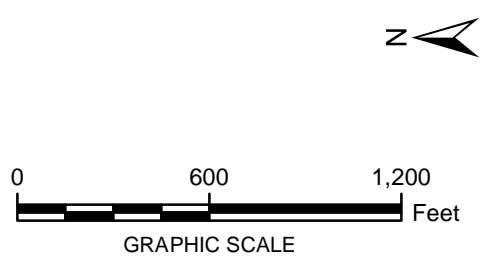


**LEGEND:**

- Monitoring Wells
- ▲ Surface Water Stations
- Total Antimony Contours (mg/L) (Dashed where inferred)
- Historical Arroyo Trace Lines
- - - Property Boundary
- Historical Drainage Divide

**EP-81** Well ID  
**0.00177 J / 0.00176 J** Dissolved Antimony/Total Antimony (mg/L)

Note:  
 Antimony Screening Level = 0.006 mg/L (EPA Drinking Water MCL)  
 EPA = Environmental Protection Agency  
 J = The reported value was obtained from a reading that was less than the reporting limit but greater than or equal to the method detection limit  
 MCL = Maximum Contaminant Level  
 mg/L = milligrams per liter  
 < = Non detect at the reporting limit shown  
 \*Actual location of SEP-6 is approximately one mile further downstream on the American Canal.  
 \*\*Data collected in October 2012  
 \*\*\*TxDOT monitoring well not sampled



FORMER EL PASO SMELTER SITE  
 EL PASO, TEXAS

**ANTIMONY DISTRIBUTION IN GROUNDWATER  
 FALL 2012**

**FIGURE  
 4-62**

**MALCOLM  
 PIRNIE**