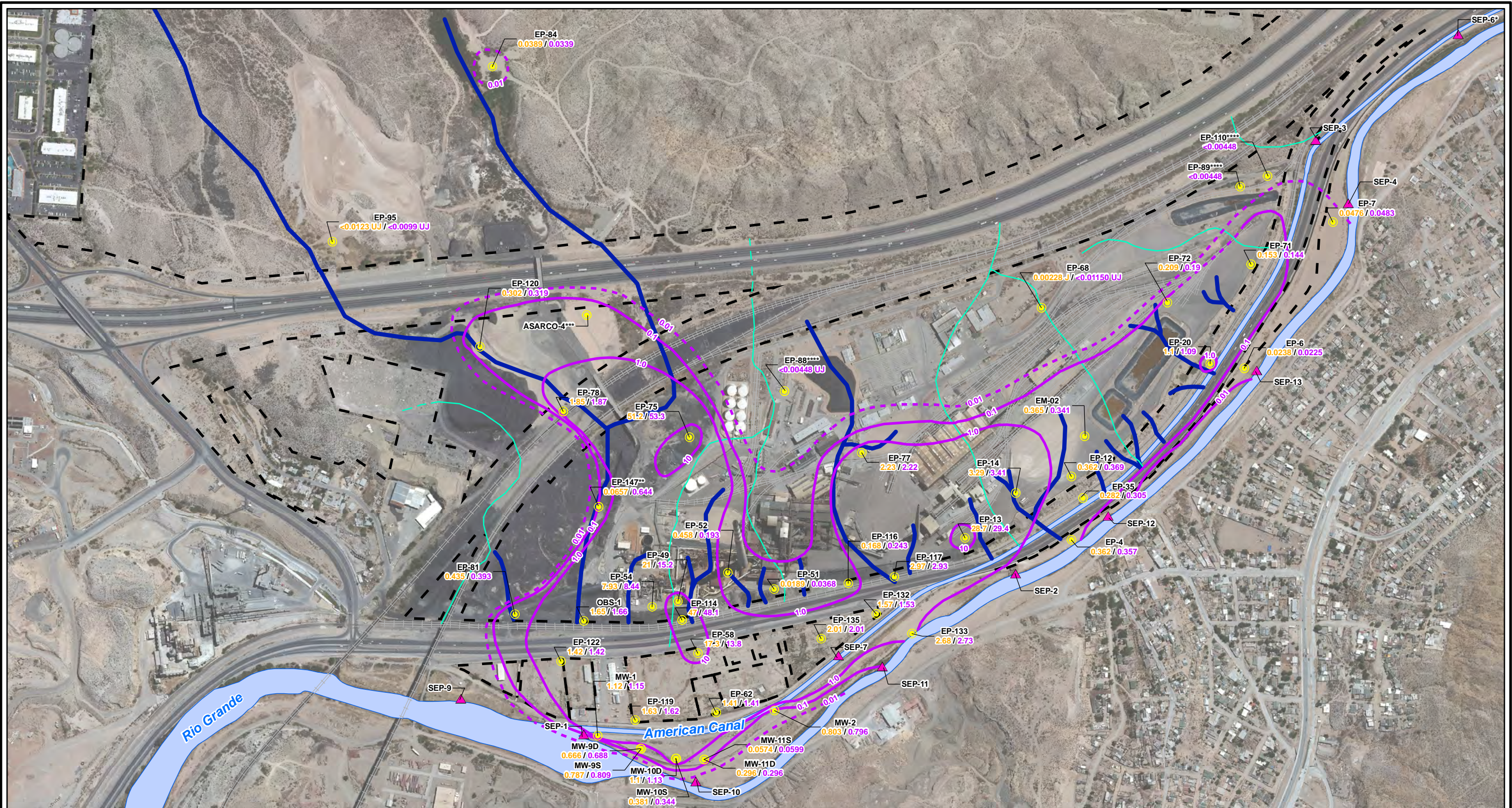


CITY: Highlands Ranch DIV/GROUP: GIS DB: BG
 Project (Project #):
 Path: I:\ASARCO - El Paso\GIS\MXD\RI - Revised\Fig 4-63 Arsenic GW - Fall 2012.mxd Date: 9/13/2013 Time: 3:43:57 PM



LEGEND:

- Monitoring Wells
 - Surface Water Stations
 - Total Arsenic Contours (mg/L) (Dashed where inferred)
 - Historical Arroyo Trace Lines
 - Property Boundary
 - Historical Drainage Divide
- EP-75 Well ID**
51.2 / 53.3 Dissolved Arsenic/Total Arsenic (mg/L)

Note:
 Arsenic Screening Level = 0.01 mg/L (EPA Drinking Water MCL)
 EPA = Environmental Protection Agency
 J = The reported value was obtained from a reading that was less than reporting limit but greater than or equal to the method detection limit.
 UJ = Estimated reporting limit
 MCL = Maximum Contaminant Level
 mg/L = milligrams per liter
 < = Non detect at the reporting limit shown

*Actual location of SEP-6 is approximately one mile further downstream on the American Canal.
 **Data collected October 2012
 ***TxDOT monitoring well not sampled
 ****Data collected August 2009

Z

0 600 1,200
 Feet
 GRAPHIC SCALE

FORMER EL PASO SMELTER SITE
 EL PASO, TEXAS

**ARSENIC DISTRIBUTION IN GROUNDWATER
 FALL 2012**

MALCOLM PIRNIE

**FIGURE
 4-63**