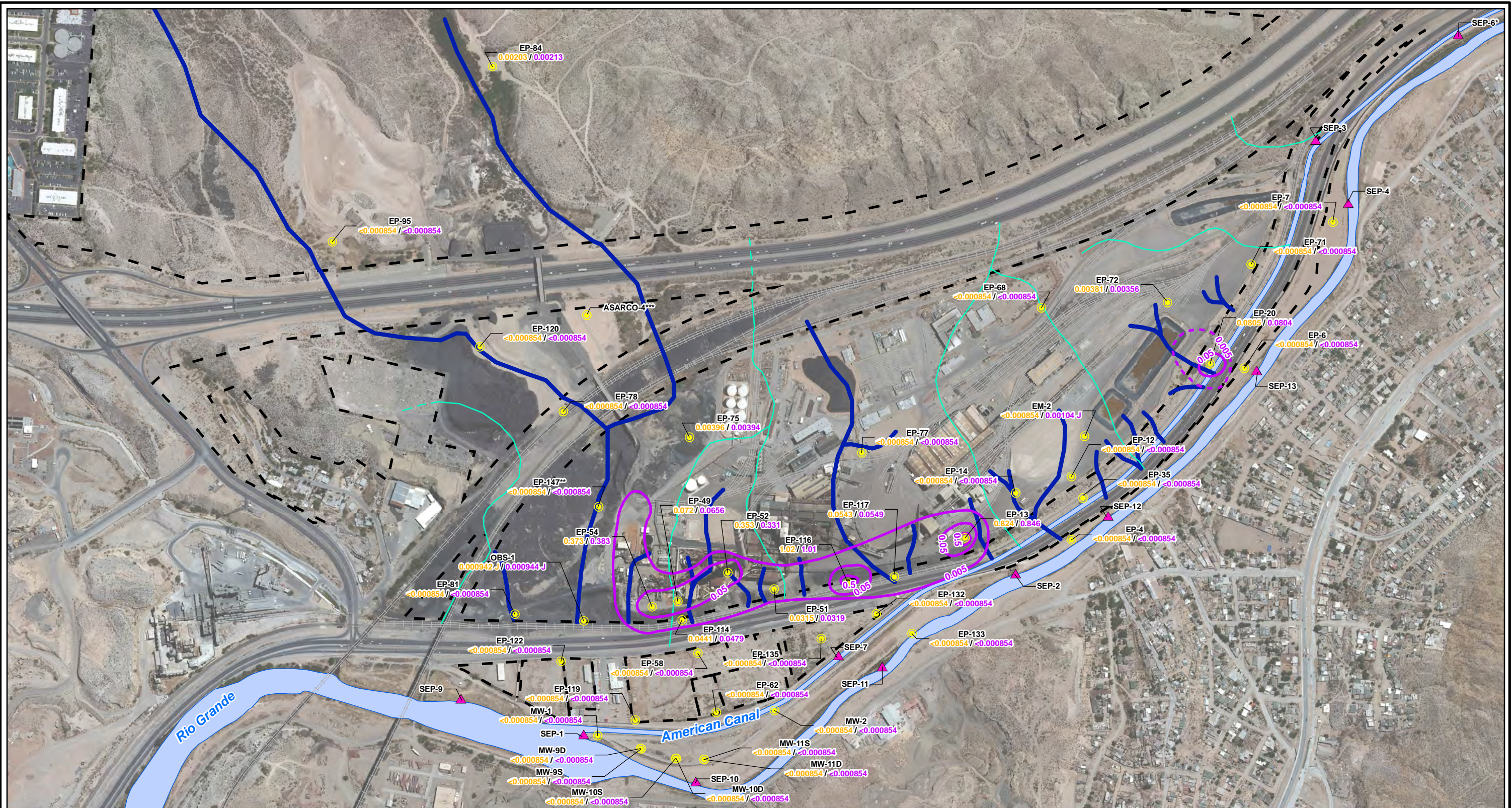


CITY: Highlands Ranch DIV/GROUP: GIS DB: BG  
 Project (sect 4)  
 Path: I:\ASARCO - El Paso\GIS\MXD\RI - Revised\Fig 4-64 Cadmium\_GW\_Fall2012.mxd Date: 9/13/2013 Time: 3:43:52 PM

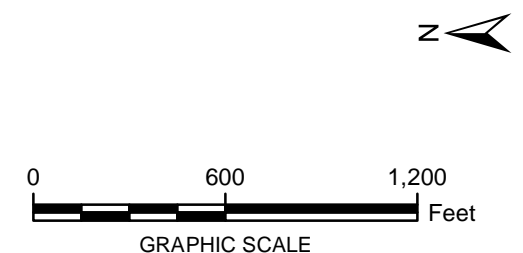


**LEGEND:**

- Monitoring Wells
- ▲ Surface Water Stations
- Total Cadmium Contours (mg/L)  
(Dashed where inferred)
- Historical Arroyo Trace Lines
- - - Property Boundary
- Historical Drainage Divide

**EP-81** Well ID  
<math><0.000854</math> / <math><0.000854</math> Dissolved Cadmium/Total Cadmium (mg/L)

**Note:**  
 Cadmium Screening Level = 0.005 mg/L (EPA Drinking Water MCL)  
 EPA = Environmental Protection Agency  
 J = The reported value was obtained from a reading that was less than reporting limit but greater than or equal to the method detection limit.  
 <math><= </math> Non detect at the reporting limit shown  
 \*Actual location of SEP-6 is approximately one mile further downstream on the American Canal.  
 \*\*Data collected October 2012  
 \*\*\*TxDOT monitoring well not sampled



FORMER EL PASO SMELTER SITE  
 EL PASO, TEXAS

**CADMIUM DISTRIBUTION IN GROUNDWATER  
 FALL 2012**

**FIGURE  
 4-64**

**MALCOLM  
 PIRNIE**