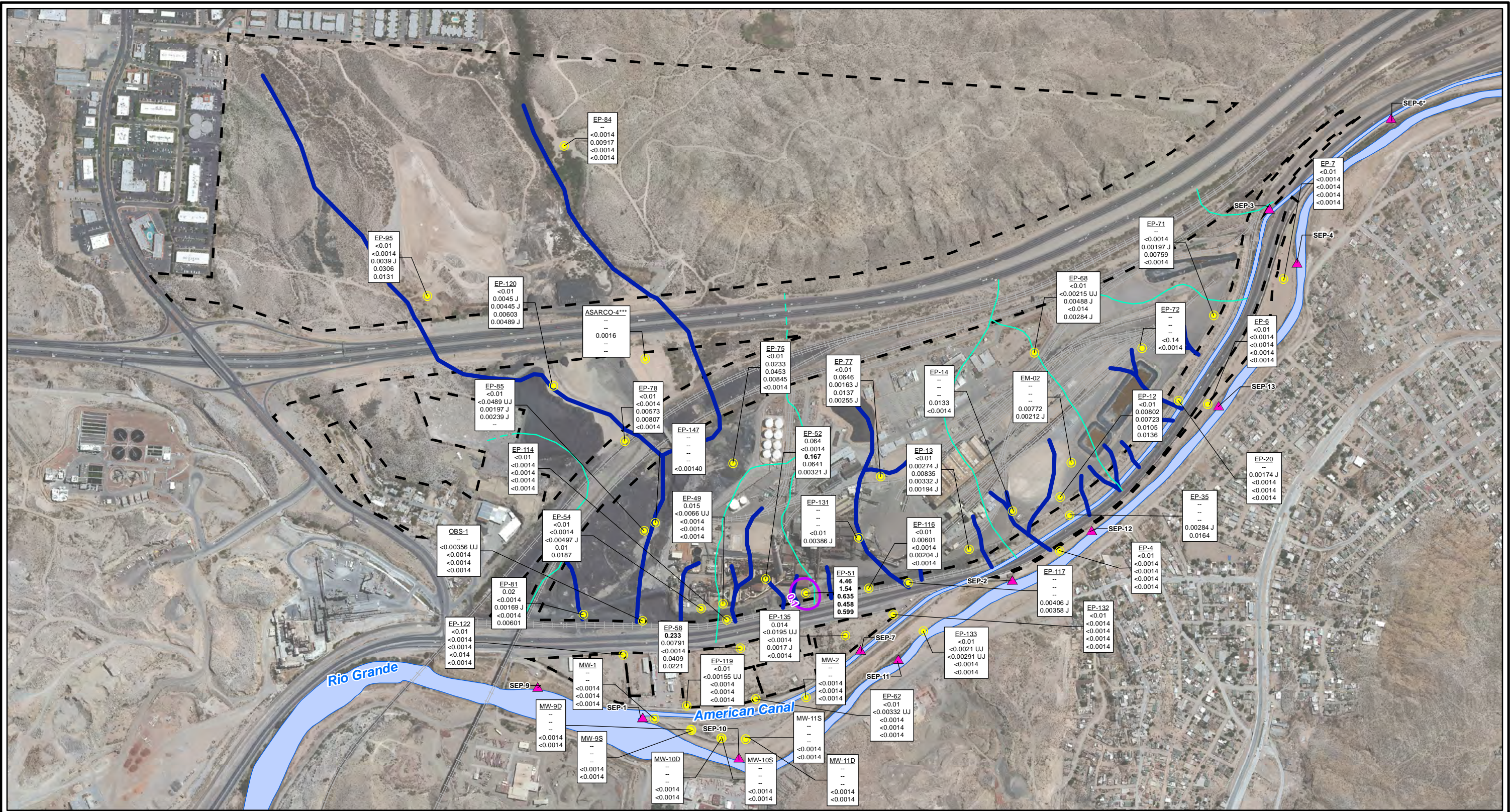


CITY: Highlands Ranch DIV/GROUP: GIS DB: BG
 Project (Project #):
 Path: I:\ASARCO - El Paso\GIS\MXD\RI Revised\Fig 4-65 Chromium 2010to2012.mxd Date: 9/13/2013 Time: 3:43:21 PM



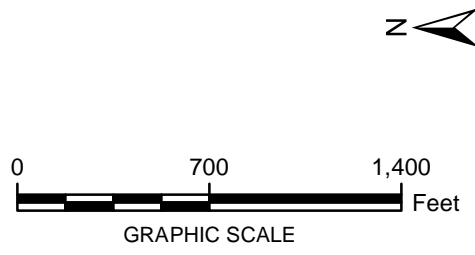
LEGEND:

- Monitoring Wells
- ▲ Surface Water Stations
- Historical Arroyo Trace Lines
- Property Boundary
- Historical Drainage Divide
- Total Chromium Contours (mg/L; Fall 2012)

Note:
 Chromium Screening Level = 0.1 mg/L (EPA Drinking Water MCL)
 EPA = Environmental Protection Agency
 J = The reported value was obtained from a reading that was less than reporting limit but greater than or equal to the method detection limit.
 UJ = Estimated reporting limit
 MCL = Maximum Contaminant Level
 mg/L = milligrams per liter
 < = Non detect at the reporting limit shown
 -- = No Result

Bolded Value = result exceeds PCL
 *Actual location of SEP-6 is approximately one mile further downstream on the American Canal.
 ***TxDOT monitoring well sampled June 2011; dissolved concentrations used for contouring

EP-54	Well ID
<0.01	Fall 2010
<0.0014	Spring 2011
<0.00497 J	Fall 2011
0.01	Spring 2012
0.0187	Fall 2012



FORMER EL PASO SMELTER SITE
EL PASO, TEXAS

**CHROMIUM DISTRIBUTION IN GROUNDWATER
FALL 2010 - FALL 2012**

**MALCOLM
PIRNIE**

**FIGURE
4-65**