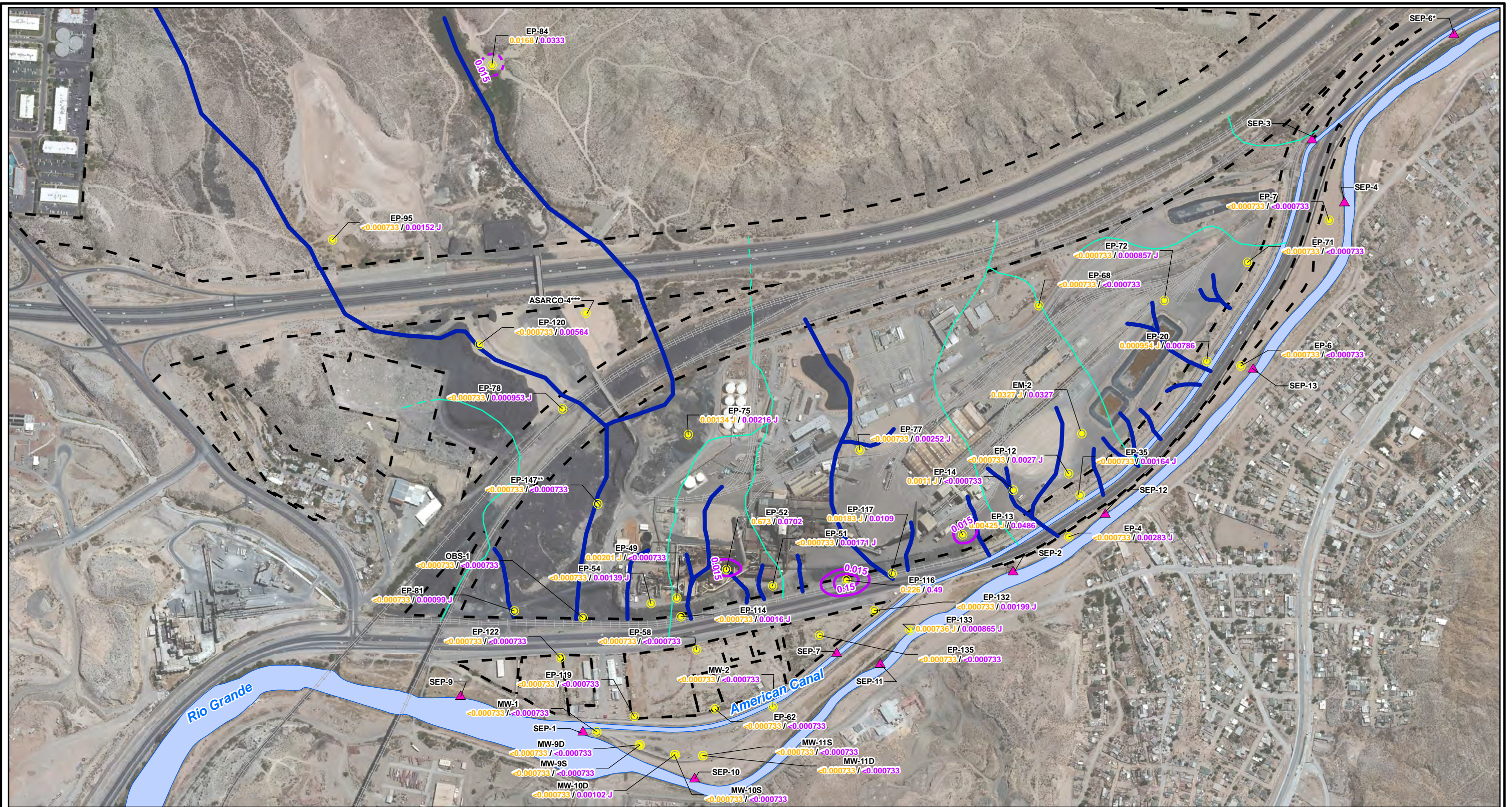


CITY: Highlands Ranch DIV/GROUP: GIS DB: BG  
 Project (Project #):  
 Path: \\ASARCO\GIS\IMXD\RI\_ Revised\Fig 4-69 Lead GW\_Fall2012.mxd Date: 9/13/2013 Time: 3:55:21 PM

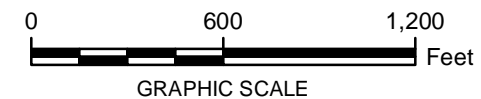
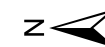


**LEGEND:**

- Monitoring Wells
- ▲ Surface Water Stations
- Total Lead Contours (mg/L)  
(Dashed where Inferred)
- Historical Arroyo Trace Lines
- Property Boundary
- Historical Drainage Divide

**EP-81** Well ID  
<0.000733 / 0.00099 J Dissolved Lead/Total Lead (mg/L)

Note:  
 Lead Screening Level = 0.015 mg/L (EPA Drinking Water MCL)  
 EPA = Environmental Protection Agency  
 J = The reported value was obtained from a reading that was less than reporting limit but greater than or equal to the method detection limit.  
 MCL = Maximum Contaminant Level  
 mg/L = milligrams per liter  
 < = Non detect at the reporting limit shown  
 \*Actual location of SEP-6 is approximately one mile further downstream on the American Canal.  
 \*\*Data collected October 2012  
 \*\*\*TxDOT monitoring well not sampled



FORMER EL PASO SMELTER SITE  
 EL PASO, TEXAS

**LEAD DISTRIBUTION IN GROUNDWATER  
 FALL 2012**



**FIGURE  
 4-69**