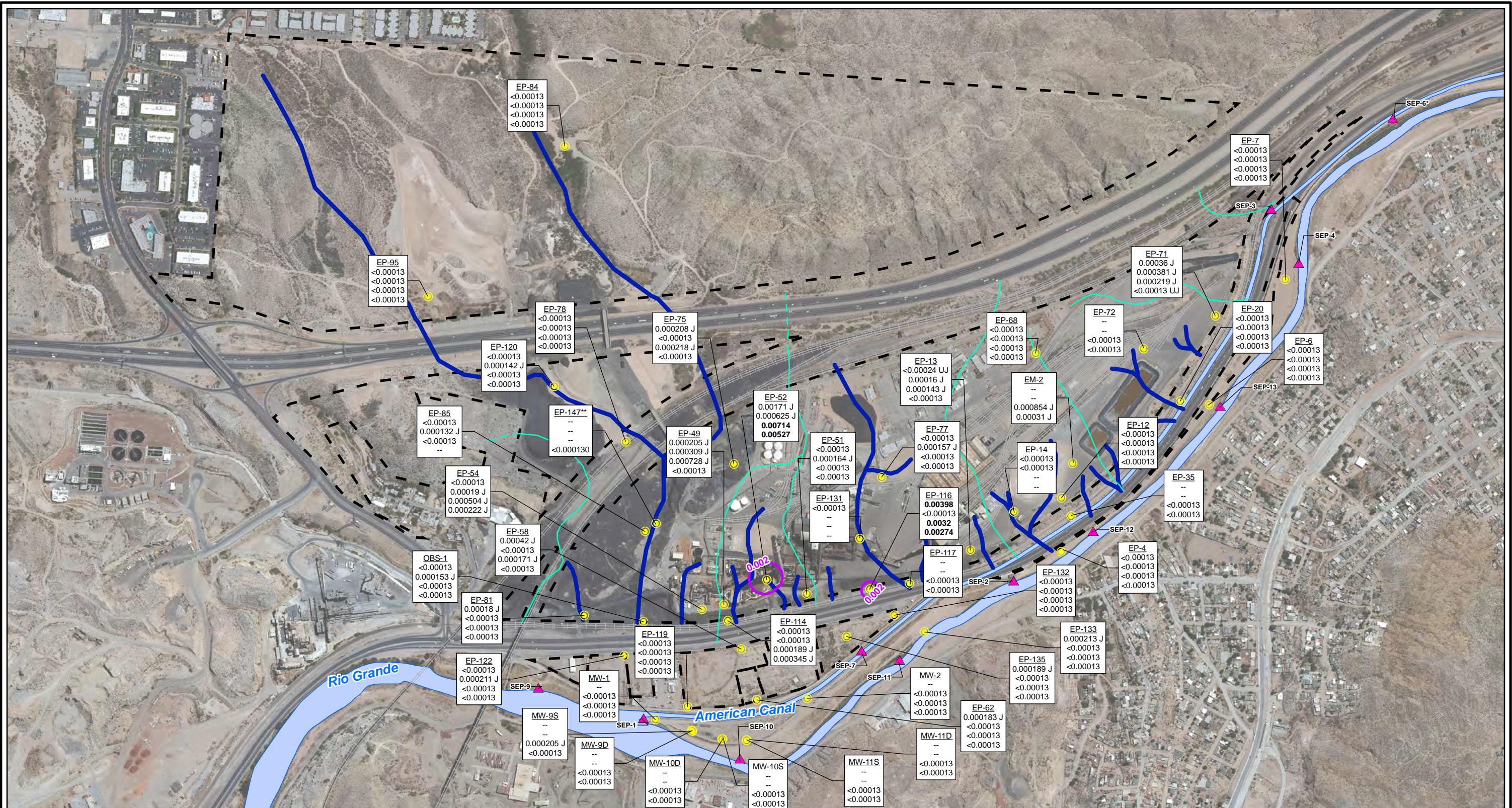


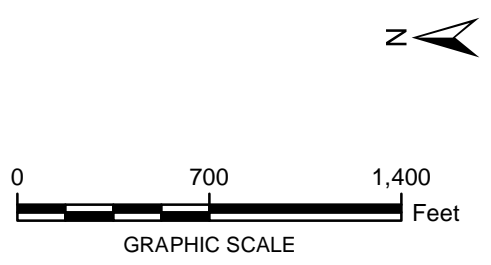
CITY: Highlands Ranch DIV/GROUP: GIS DB: BG  
 Project (Project #): El Paso/GIS/MXD/R1/ Revised/Fig 4-71 Mercury 2011to2012.mxd Date: 9/13/2013 Time: 3:54:24 PM  
 Path: I:\SARCO - El Paso\GIS\MXD\R1/ Revised/Fig 4-71 Mercury 2011to2012.mxd



- LEGEND:**
- Monitoring Wells
  - ▲ Surface Water Stations
  - Historical Arroyo Trace Lines
  - Property Boundary
  - Historical Drainage Divide
  - Total Mercury Contours (mg/L; Fall 2012)

Note:  
 Mercury Screening Level = 0.002 mg/L (EPA Drinking Water MCL)  
 EPA = Environmental Protection Agency  
 J = The reported value was obtained from a reading that was less than reporting limit but greater than or equal to the method detection limit.  
 MCL = Maximum Contaminant Level  
 mg/L = milligrams per liter  
 -- = No Result  
 <math><=</math> Non detect at the reporting limit shown  
**Bolded Value** = result exceeds MCL  
 \*Actual location of SEP-6 is approximately one mile further downstream on the American Canal.  
 \*\*Data collected October 2012

Well ID	Spring 2011	Fall 2011	Spring 2012	Fall 2012
EP-54	<math><0.00013</math>	<math><0.00013</math>	<math><0.00013</math>	<math><0.00013</math>
	0.00019 J	0.000504 J	0.000222 J	



FORMER EL PASO SMELTER SITE  
EL PASO, TEXAS

**MERCURY DISTRIBUTION IN GROUNDWATER  
SPRING 2011 - FALL 2012**

**MALCOLM  
PIRNIE**

**FIGURE  
4-71**