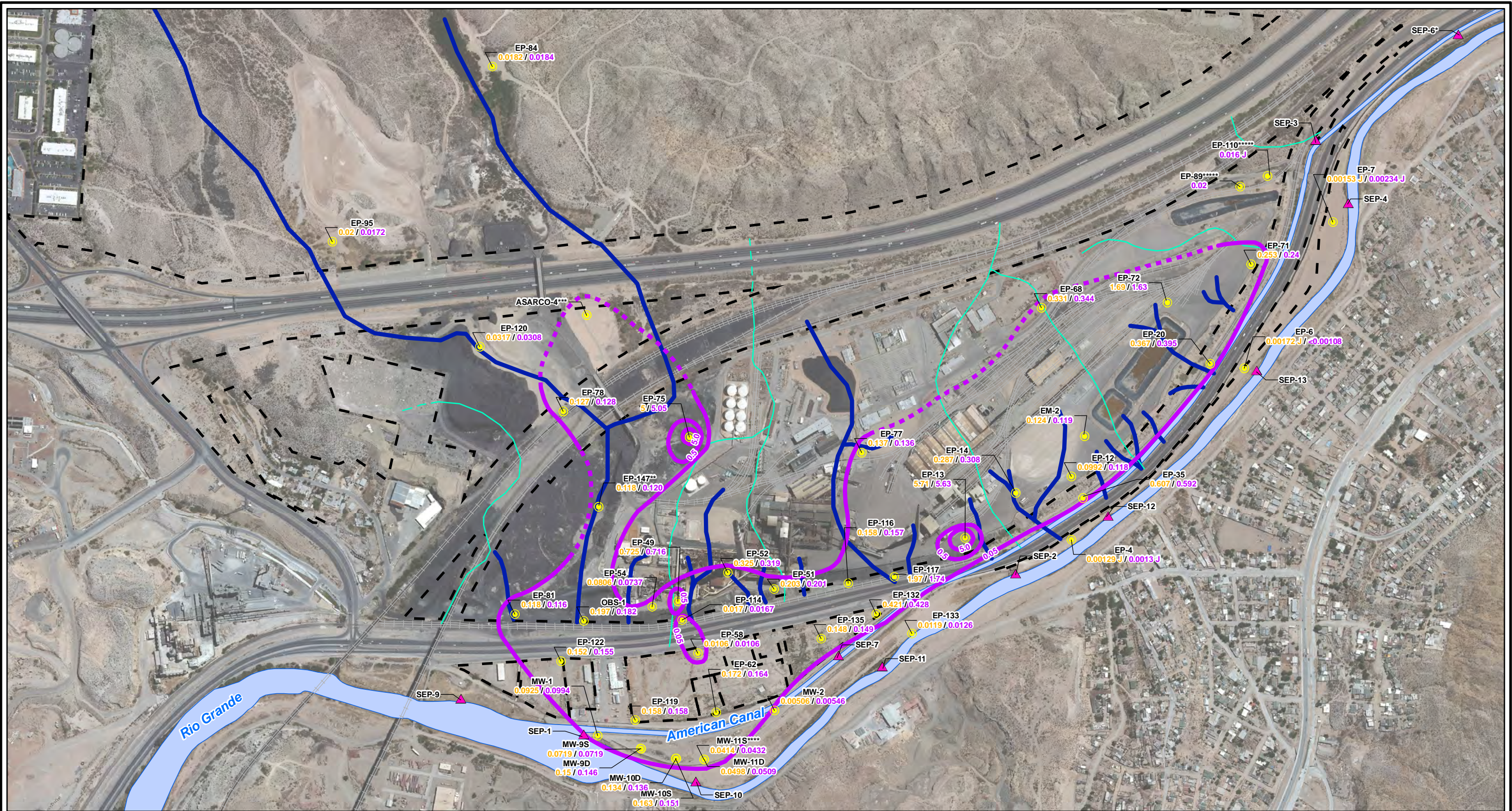


CITY: Highlands Ranch DIV/GROUP: GIS DB: BG
 Project (Project #): I:\ASARCO_EIPaso\GIS\MXD\REVISED\Fig 4-74 Selenium_GW_Fall2012.mxd Date: 9/13/2013 Time: 3:59:10 PM
 Path: I:\ASARCO_EIPaso\GIS\MXD\REVISED\Fig 4-74 Selenium_GW_Fall2012.mxd



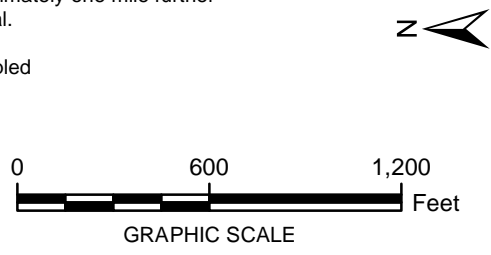
LEGEND:

- Monitoring Wells
- ▲ Surface Water Stations
- Total Selenium Contours (mg/L)
(Dashed where inferred)
- Historical Arroyo Trace Lines
- Historical Drainage Divide
- - - Property Boundary

EP-81 Well ID
● **0.118 / 0.116** Dissolved Selenium/Total Selenium (mg/L)

Note:
 Selenium Screening Level = 0.05 mg/L (EPA Drinking Water MCL)
 EPA = Environmental Protection Agency
 J = The reported value was obtained from a reading that was less than reporting limit but greater than or equal to the method detection limit.
 MCL = Maximum Contaminant Level
 mg/L = milligrams per liter
 < = Non detect at the reporting limit shown

*Actual location of SEP-6 is approximately one mile further downstream on the American Canal.
 **Data collected October 2012
 ***TxDOT monitoring well not sampled
 ****Not used in contouring
 *****Data collected in August 2009



FORMER EL PASO SMELTER SITE
 EL PASO, TEXAS

**SELENIUM DISTRIBUTION IN GROUNDWATER
 FALL 2012**

**MALCOLM
 PIRNIE**

**FIGURE
 4-74**