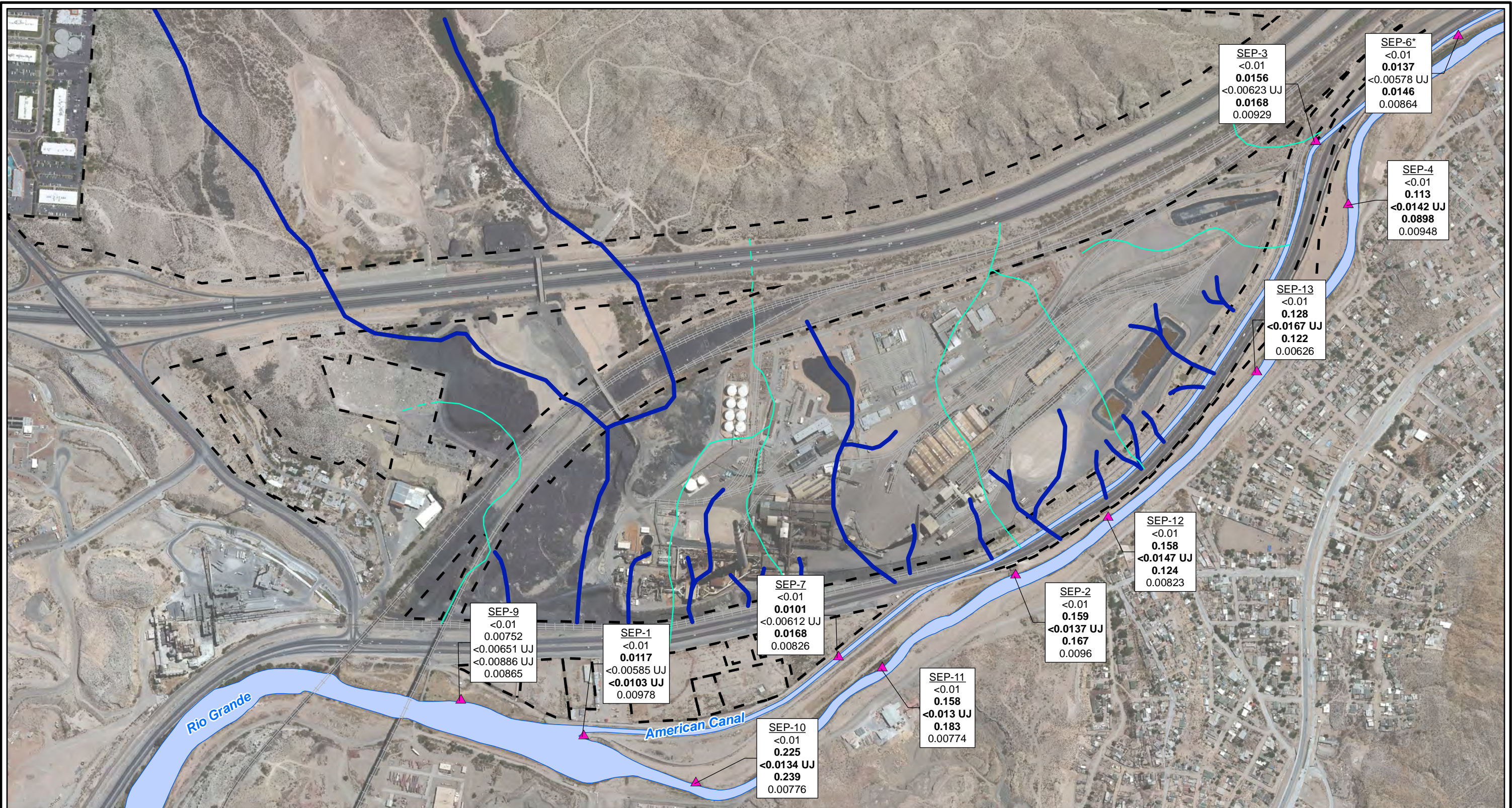


CITY: Highlands Ranch DIV/GROUP: GIS DB: BG  
 Project (Project #):  
 Path: \NASARCO - ElPaso\GIS\MXD\RI - Revises\Fig 4-79 Arsenic SW 2010to2012.mxd Date: 9/13/2013 Time: 4:04:20 PM

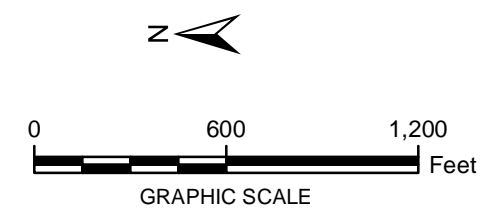


**LEGEND:**

- ▲ Surface Water Stations
- Historical Arroyo Trace Lines
- - - Property Boundary
- Historical Drainage Divide

Note:  
 Screening Level = 0.01 mg/L  
 UJ = Estimated reporting limit  
 mg/L = milligrams per liter  
**Bolded** value = result exceeds Screening Level  
 < = Non detect at the reporting limit shown  
 \*Actual location of SEP-6 is approximately one mile further downstream on the American Canal.

SEP-7 <0.01 <b>0.0101</b> <0.00612 UJ <b>0.0168</b> 0.00826	Well ID Fall 2010 Spring 2011 Fall 2011 Spring 2012 Fall 2012
--	--




FORMER EL PASO SMELTER SITE  
EL PASO, TEXAS

---

**ARSENIC DISTRIBUTION IN SURFACE WATER  
FALL 2010 TO FALL 2012**

---



**FIGURE  
4-79**