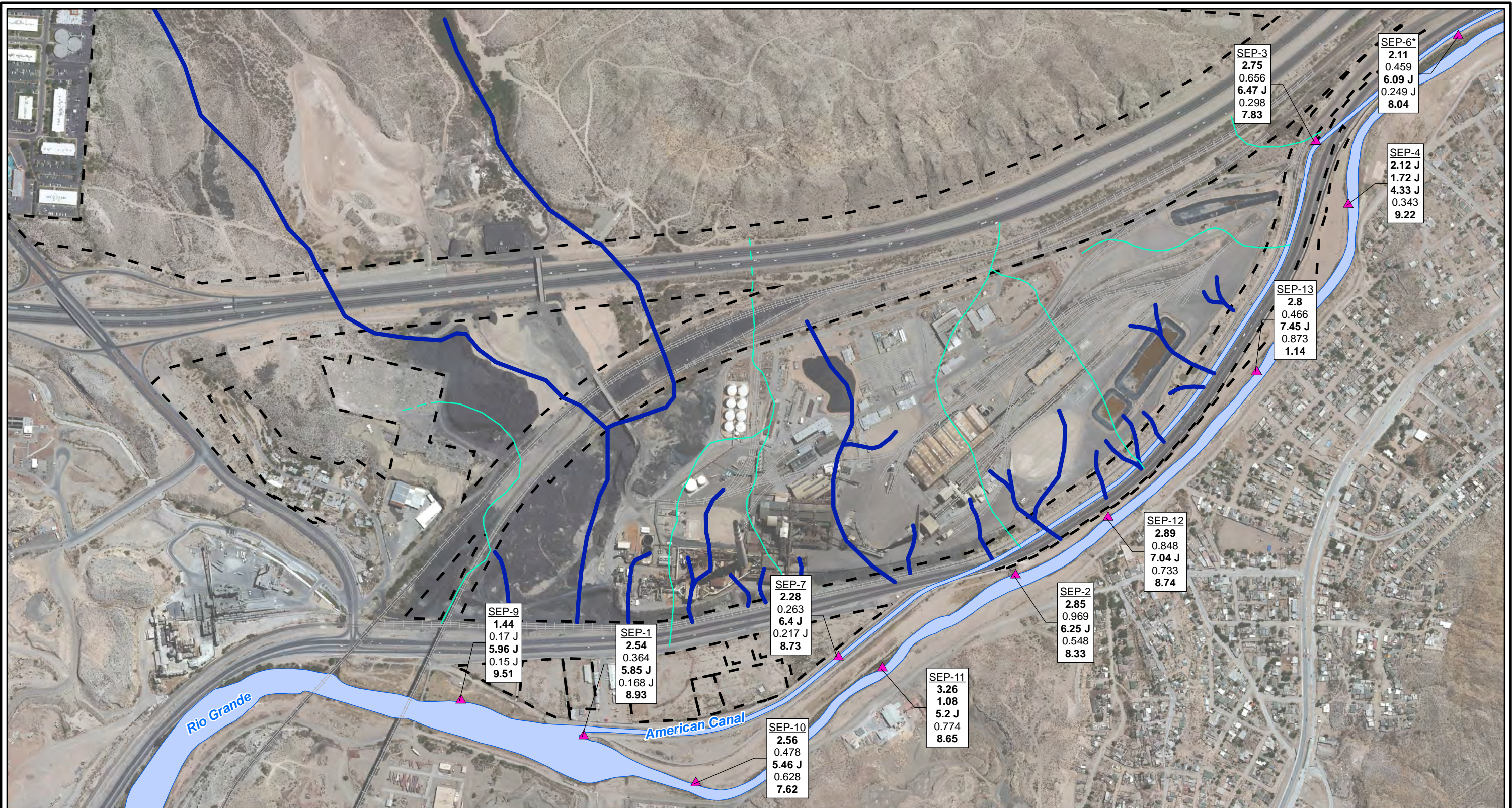


CITY: Highlands Ranch DIV/GROUP: GIS DB: BG
 Project (Project #):
 Path: \\NASARCO_ElPaso\GIS\MXD\RI_Revision\Fig 4-81 Iron_SW_2010to2012.mxd Date: 9/15/2013 Time: 4:04:30 PM

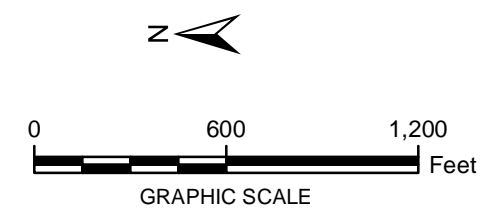


LEGEND:

- ▲ Surface Water Stations
- Historical Arroyo Trace Lines
- - - Property Boundary
- Historical Drainage Divide

Note:
 Screening Levels - American Canal: Not established, applied Rio Grande Screening Level. Rio Grande: 1 mg/L
 mg/L = milligrams per liter
 J = The reported value was obtained from a reading that was less than reporting limit but greater than or equal to the method detection limit.
Bolded value = result exceeds Screening Level
 *Actual location of SEP-6 is approximately one mile further downstream on the American Canal.

| SEP-7 | Well ID |
|--------------|-------------|
| 2.28 | Fall 2010 |
| 0.263 | Spring 2011 |
| 6.4 J | Fall 2011 |
| 0.217 J | Spring 2012 |
| 8.73 | Fall 2012 |



FORMER EL PASO SMELTER SITE
EL PASO, TEXAS

**IRON DISTRIBUTION IN SURFACE WATER
FALL 2010 TO FALL 2012**

**MALCOLM
PIRNIE**

**FIGURE
4-81**